



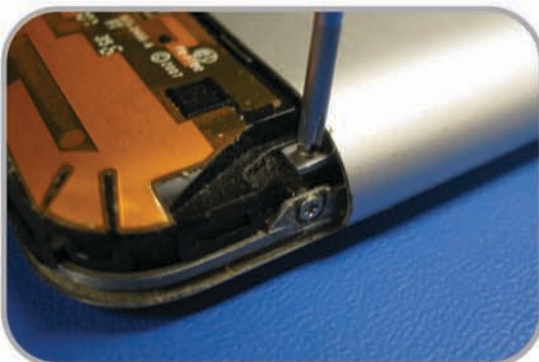
1. Start by removing the SIM card from the iPhone. Inserting a paper clip or similar item into the small hole next to the headphone jack can do this.

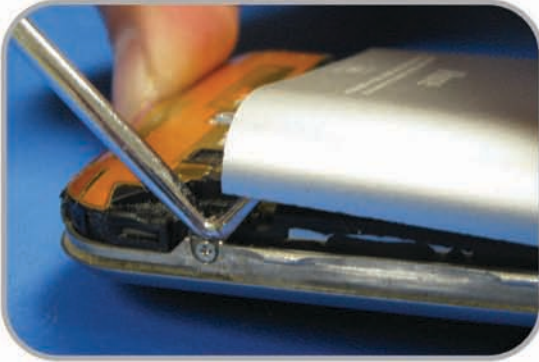


2. Use a thin plastic tool to work the WiFi cover off of the bottom of the iPhone.



3. Remove the screws that were once covered by the WiFi antenna cover. One should be in the middle of the back case, which also serves as a grounding point and one on each side.





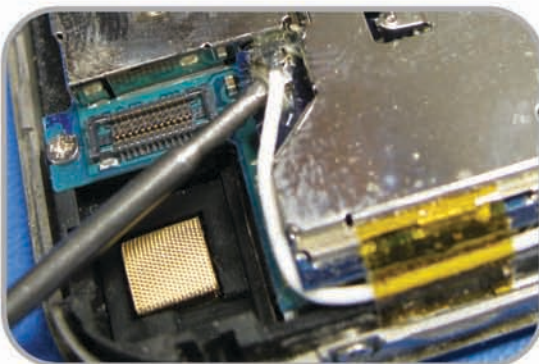
4. Once the screws are removed, lift up on the back case with a bent pick or similar tool.



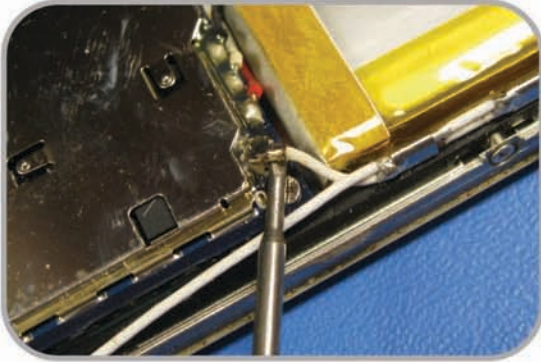
5. Unplug the headphone jack / power switch assembly.



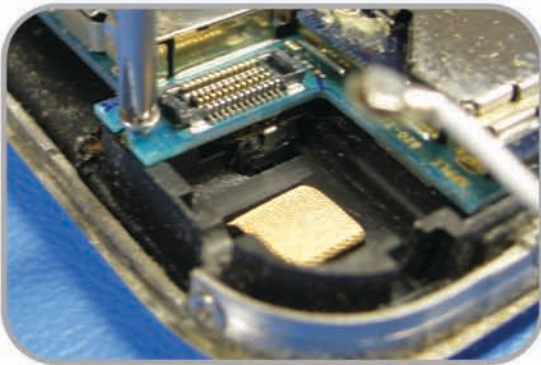
6. Use a screwdriver to lift up on the camera plug as shown in the photo.



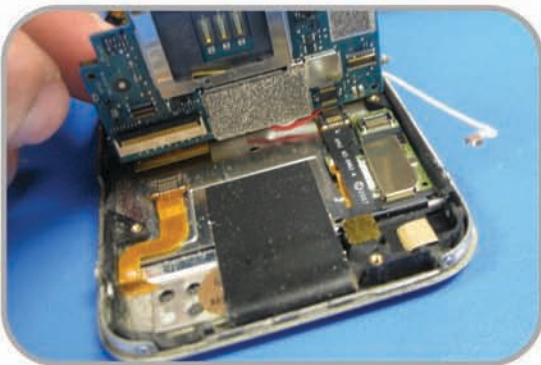
7. Now, unplug the WiFi antennas.



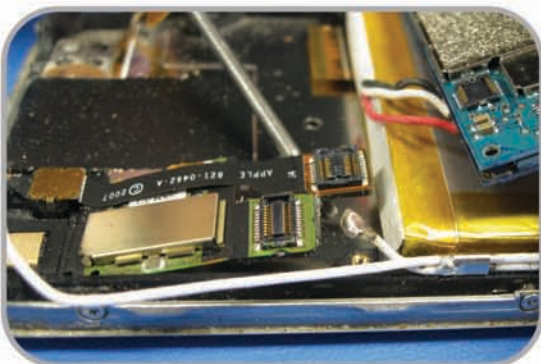
View of the WiFi cables being disconnected.



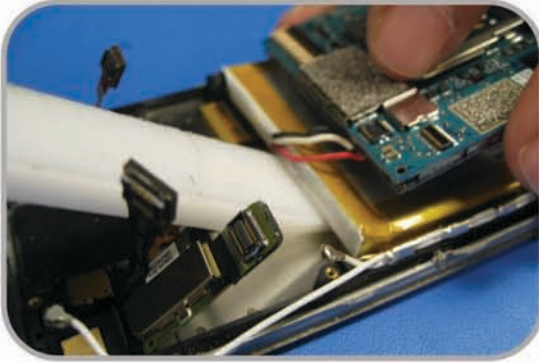
8. Remove the three visible screws holding the logic board in place.



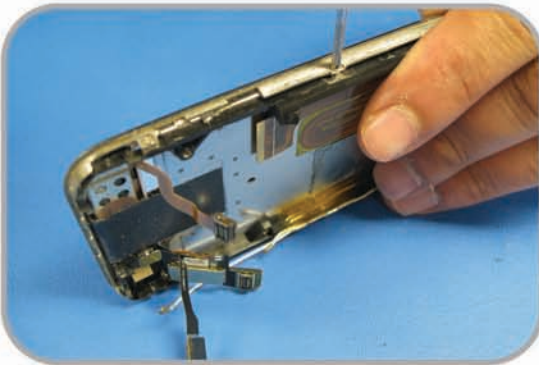
9. Lift the logic board, while doing this, the LCD, digitizer, and dock connector will release. You may feel some tension while this happens.



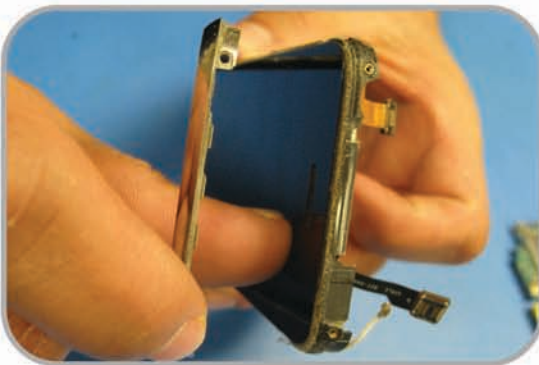
View of the LCD, digitizer, and dock connector cables unplugged.



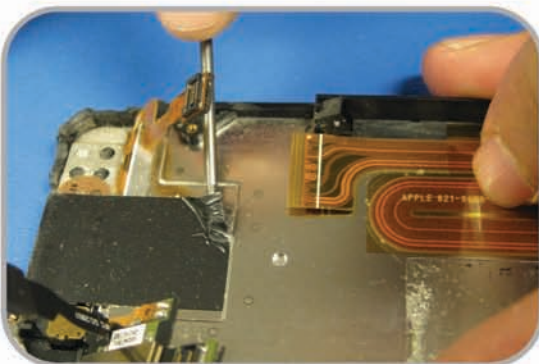
10. Start on the right hand side (away from the dock connector) to prevent damage to the iPhone, use a plastic tool to separate the battery from the back case. The adhesive is mildly strong, and it may take some force to release the battery. Once the battery is released the logic board will follow.



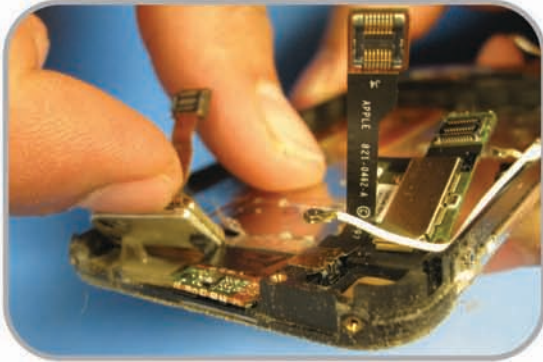
11. Remove the 10 screws on the chrome bezel. (three on each side, two on top and two on the bottom.)



12. Remove the chrome bezel by pulling straight out as in the photo.



13. Remove the tape that goes below the SIM card, this is there to prevent any problems with the SIM card and the metal parts in the area. Save the tape for re-use upon re-assembly.



14. Once you remove the black tape, it will expose a small circuit board for the speaker. To the right of the speaker board, lift up on the separate component that is attached to the LCD and digitizer assembly.



15. Use a flathead screwdriver or similar tool and start prying the digitizer off the frame. Unlike the iPhone 3G and 3G S, there is only glue on the top and bottom portions. Once this step is completed, you will have a completely dis-assembled iPhone.



To re-assemble, follow these steps in reverse order.

